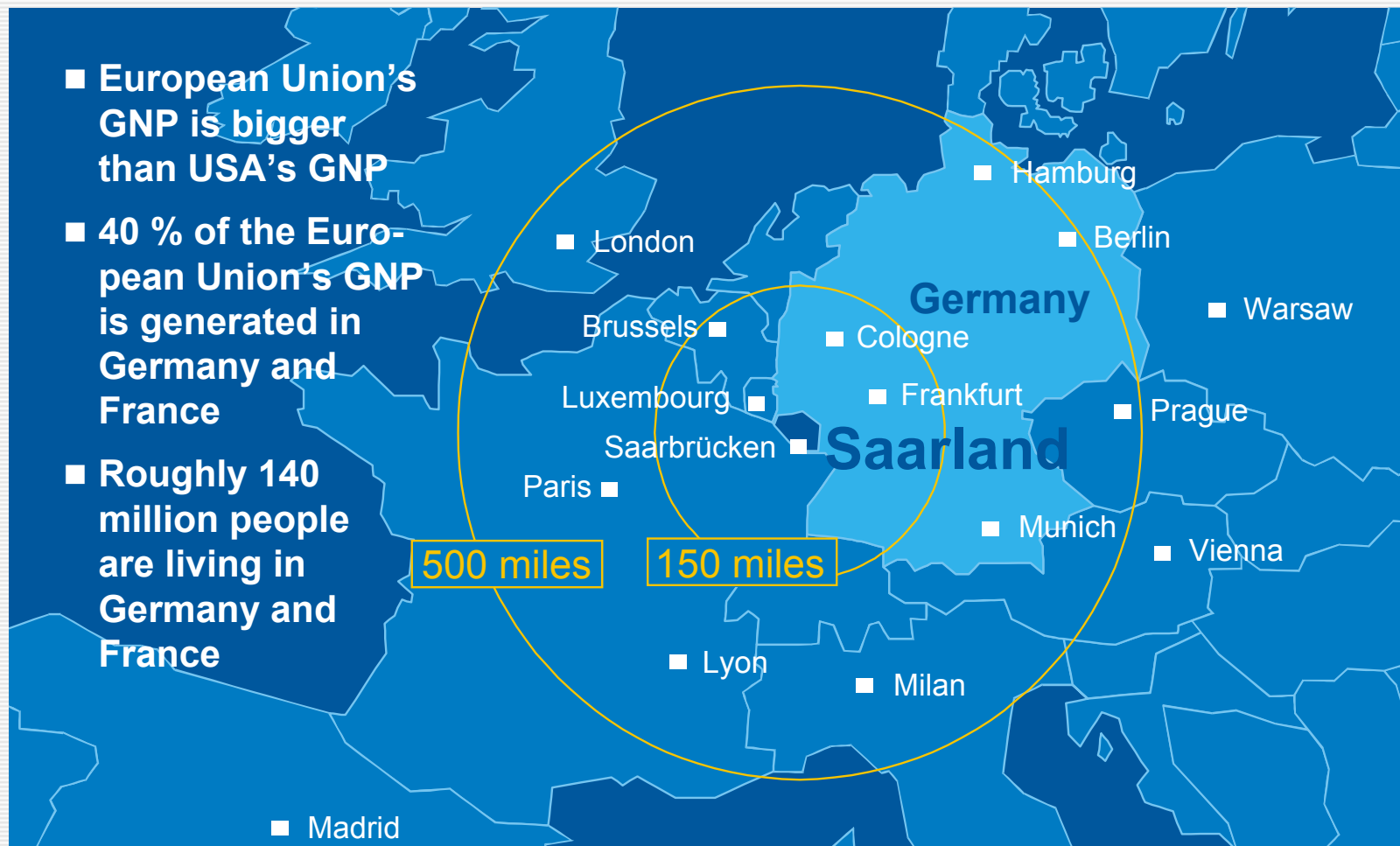




www.wirtschaft.saarland.c





- Saarland is one of the 16 states in Germany
- Saarland is located directly at the French-Luxembourg border
- Twice in the last century, Saarland politically belonged to France
- Size: approx. 2,600 sq.km
- Population: approx 1.1 mio. inhabitants
- Population density: 415 per sq.km (second highest of all German area states)





Structrual change in Saarland



World Cultural Heritage Site
the Völklingen Ironworks



Structrual change and new technologies



agriculture and
industry



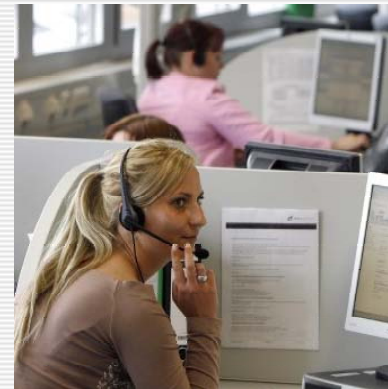
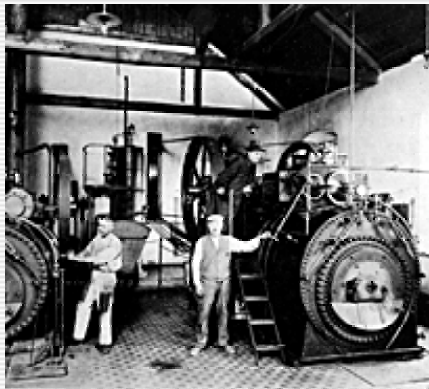
coal mining and
steel industry



automotive and
services



ICT and Nano-/
biotechnology



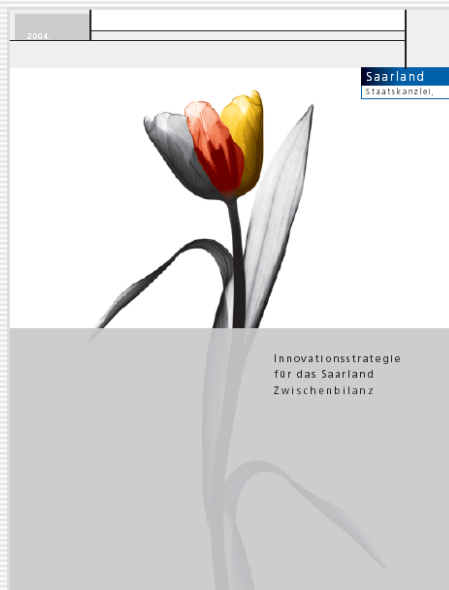
The history

Innovation Strategy 1.0 **> 85 projects**



2001

Interim Balance Sheet



2004

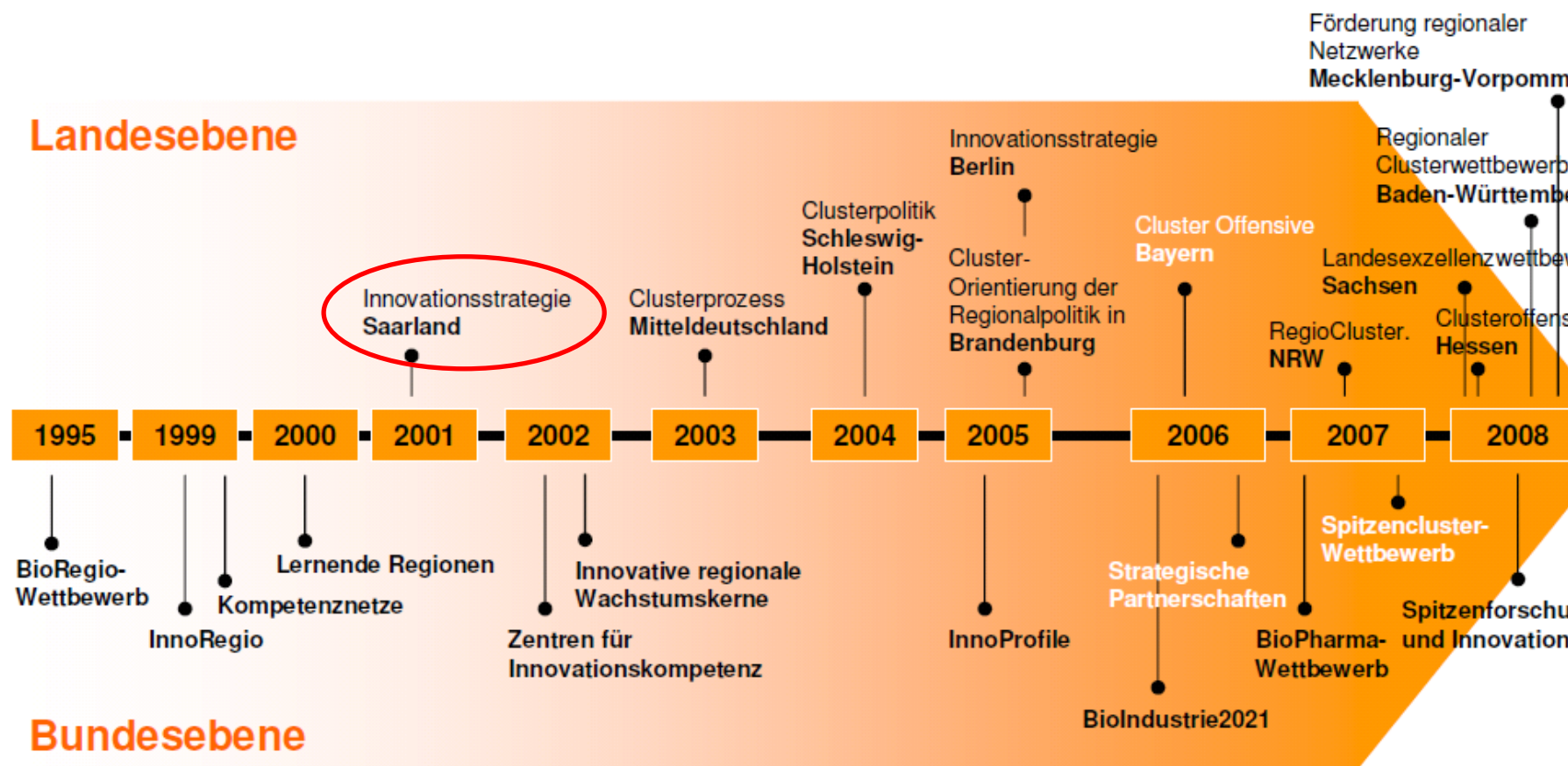
Innovation Strategy 2.0 **> 110 projects**



2007

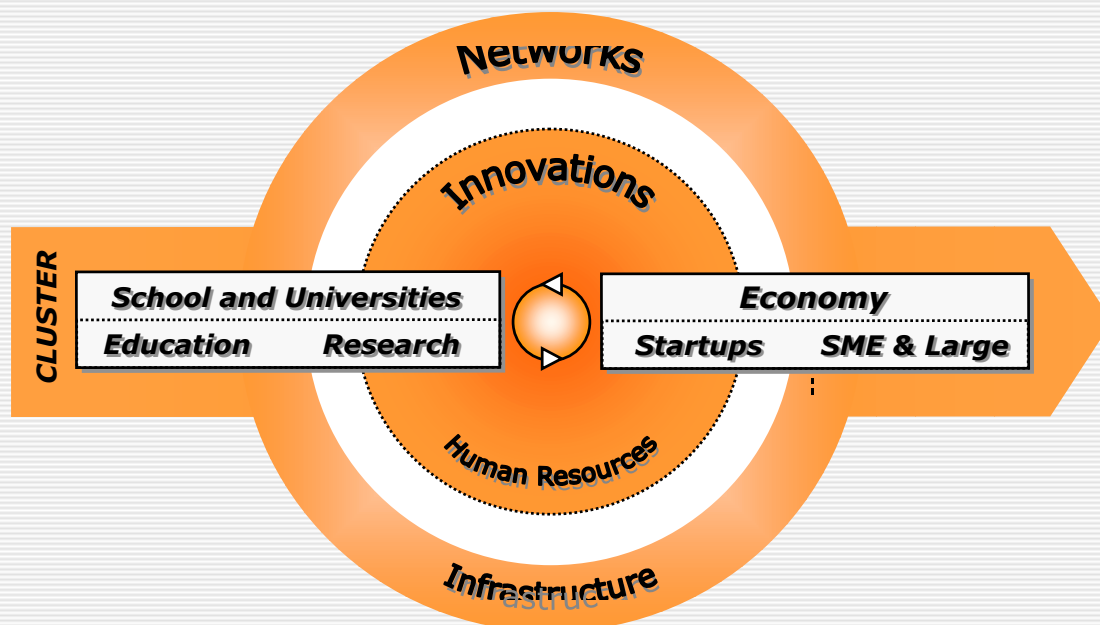


Innovation and technology strategy in Saarland: early on and continuous



Source: BMBF der High-Tech-Strategy

Saarland's Innovation Strategy



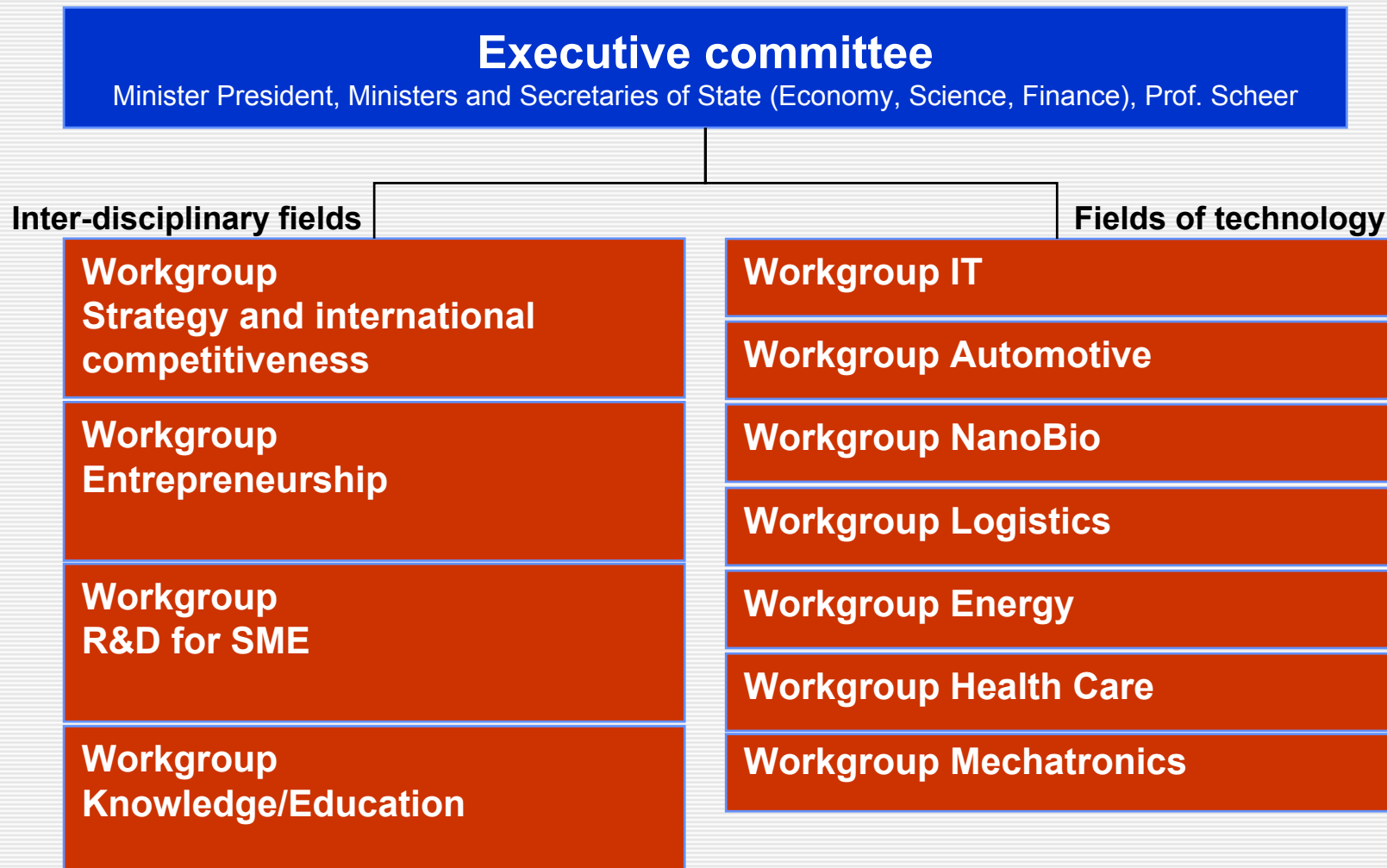
Formation of Innovation Clusters

- it.saarland
- nanobio.saarland
- automotive.saarland
- logistics.saarland
- energy.saarland
- healthcare.saarland

A good innovation policy integrates economic, science and education policy



Organisation of the strategy process: Over 100 experts were involved

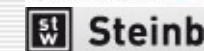




Increasing research expertise

About 100 Mio Euro investment in new Research Institutes

- New Fraunhofer Automotive Quality Saar at IZFP
12 Mio. €
- New Max-Planck-Institut für Softwaresysteme
22 Mio. €
- New Research Center for Mechatronics and Automation Engineering
~ 20 Mio. €
- Extension of German Center for Artificial Intelligence (DFKI)
~ 4,7 Mio. €
- New Intel Visual Computing Institute (Intel VCI)
- New Building for Computer Science
~ 4,8 Mio. €
- New Helmholtz Institute for Pharmaceutical Research Saarland (HIPS)
~ 18 Mio. € (projected)
- New BioMat-Centre at Fraunhofer IBMT in Sulzbach
~ 16,5 Mio. €
- Extension Building of Korean Institute for Technology (KIST Europe)
~ 4,35 Mio. €
- New Material Engineering Center Saarland (Steinbeis MECS)
~ 5,3 Mio. €





Increasing Research Expertise in the regional economy

■ **New structure of funding R&D projects**

Focussing on two new programmes

- Technology Programme Saar (since March 15th 2008)
- Programme for Development, Research and Innovation (since January 1st 2009)



Advantages of the new structure

- Open to all kinds of companies (small, medium and large, R&D Institutes, etc.)
- Extended Funding Conditions (e.g. Costs of Application in EU projects)
- More transparency, less bureaucracy
- „One-Stop-Shopping“ approach

New investment stimulus model for young and fast growing enterprises (Venture Capital funds)





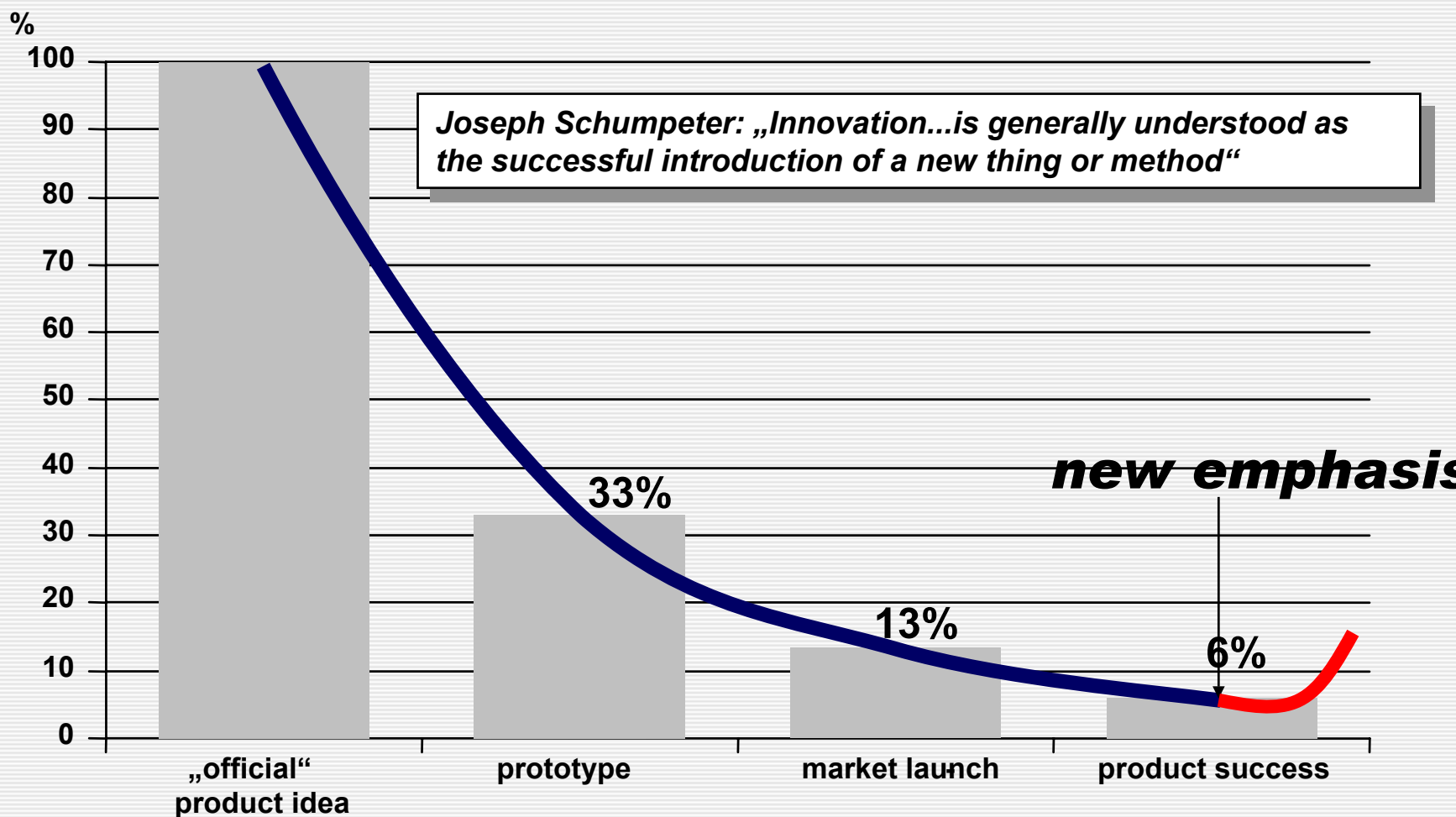
entrepreneurial spirit, start-ups, new and relocated companies

- Enlargement of the Saarland Offensive for Founders (SOG)
- Initiative ALWIS: More economic content at our schools
- New support initiative for fast-growing young companies
- Coaching and Mentoring Programmes for young entrepreneurs
- New and extended areas for innovative start-ups and business settlements





The way from idea to innovation remains complicated...





...but at the end it is worth it Sucess stories:



**nanopool helps to protect the
Atatürk-Mausoleum**
nanopool GmbH



**Water, dirt and calcium
repellent coating on a
chrome surface**
Nano-X GmbH



**Plane-control software for
Airbus A380**
AbsInt GmbH



**Kasper elevator used in 34
countries**
Alois Kasper GmbH



Ship Loader for Brazil
MLSmidt KOCH GmbH



**Eberspächer exhaust systems meet
the strictest requirements**
Eberspächer GmbH



**Coating of the Eiffel Bridge in
Girona (Spain)**
NTC Nano Tech Coatings GmbH



Thank you for your attention



Contact: Daniel Wagner, d.wagner@wirtschaft.saarland.de